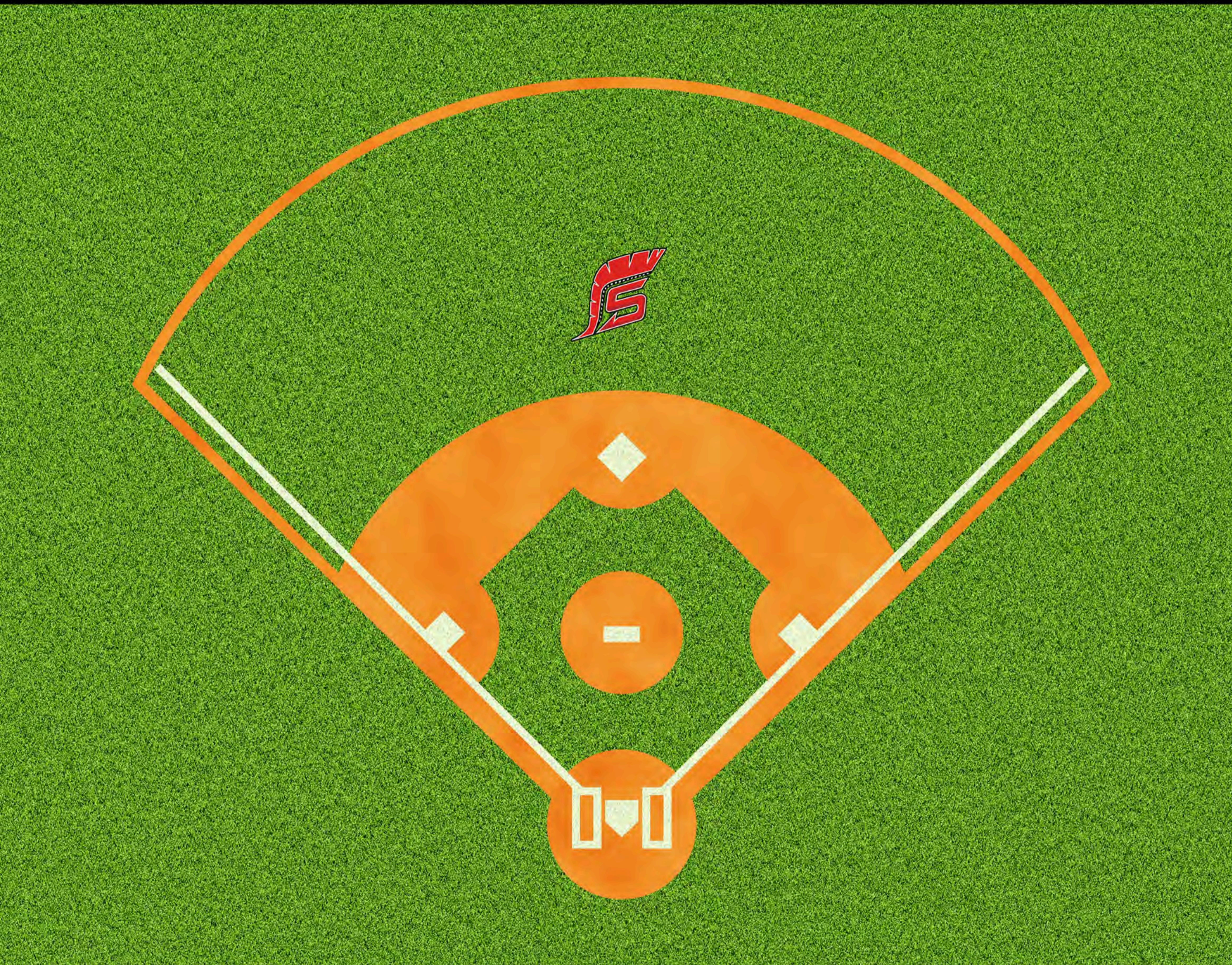


TYLER SPARTANS BASEBALL CLUB



DOUBLE CUTS & RELAYS

CHRIS MCFARLAND



DOUBLE CUTS

 = BATTER/RUNNER

 = FIELDER

 = BATTED BALL

HOW DO I KNOW IF IT'S A DOUBLE CUT?

Ball is hit to the outfield fence, and is a for sure double, possible triple for the batter.

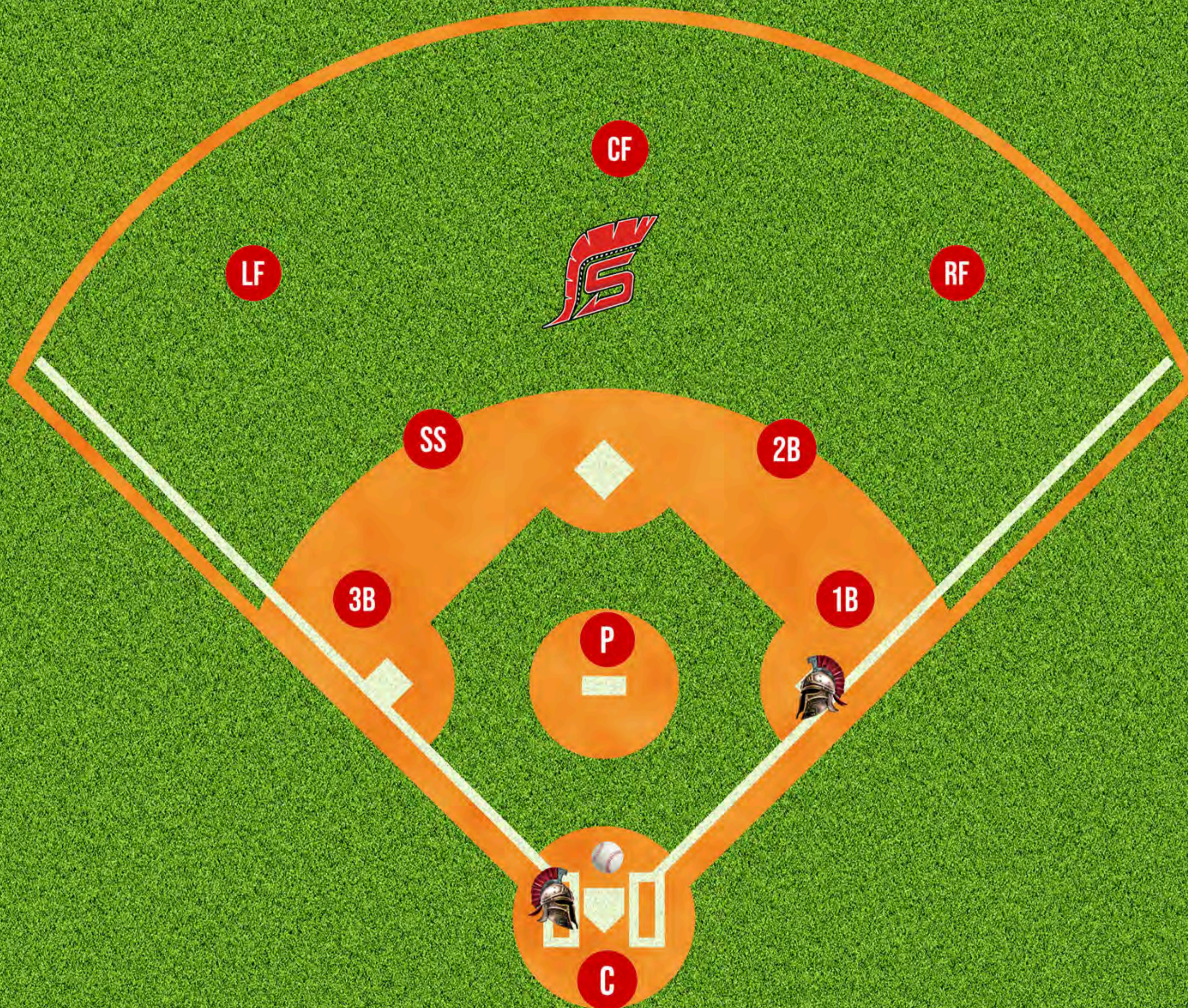
DO I RELAY THE BALL TO 3RD BASE OR HOME?

No runner on first? Relay to 3rd Base
Runner on first? Relay to Home

WHAT ABOUT RUNNERS ON 2ND BASE AND 3RD BASE?

It is assumed they will score easily, no reason to set up a relay for those runners.

*THROW 3 BASES IN FRONT OF BATTER OR RUNNER AT 1ST BASE

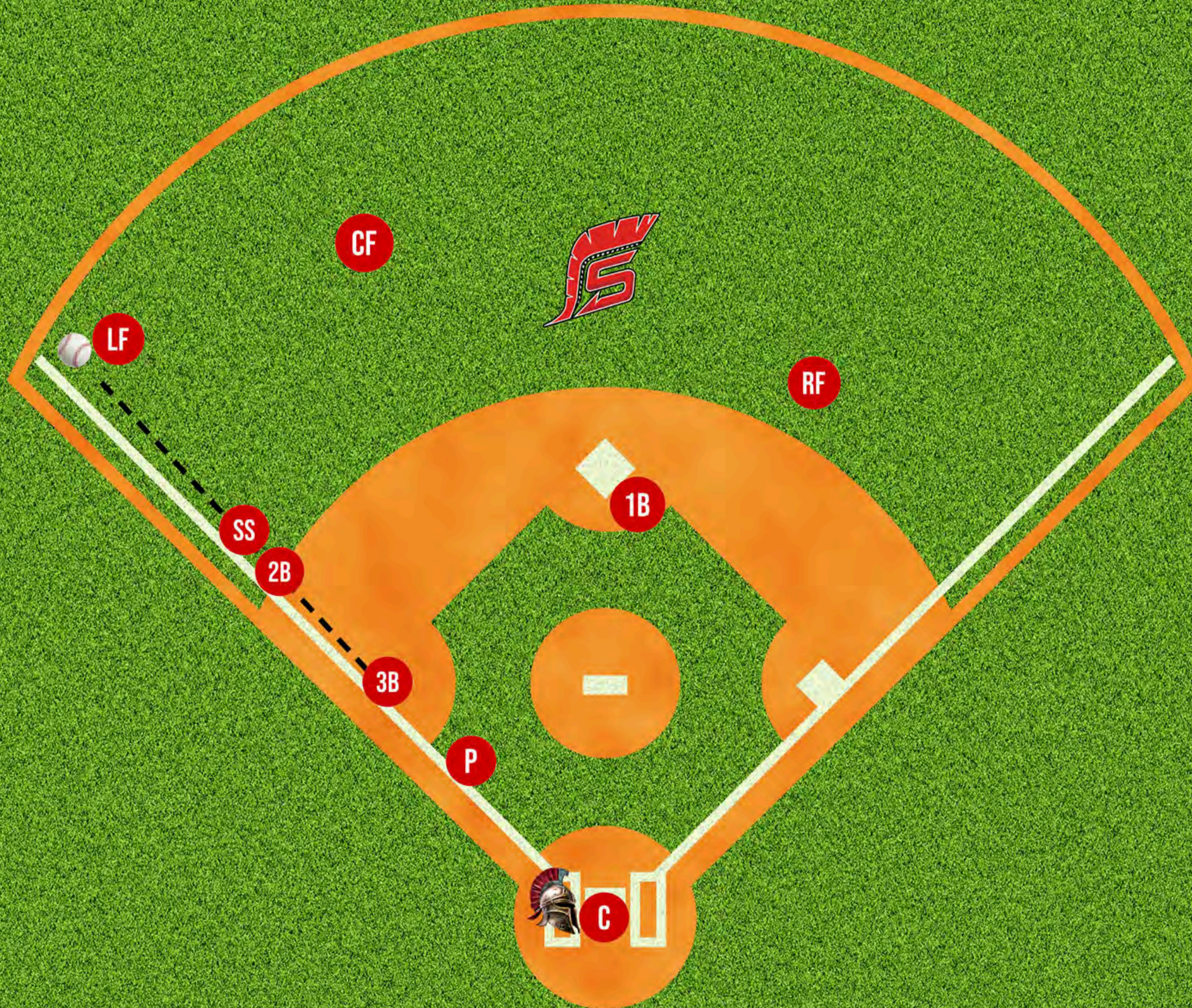


DOUBLE CUTS

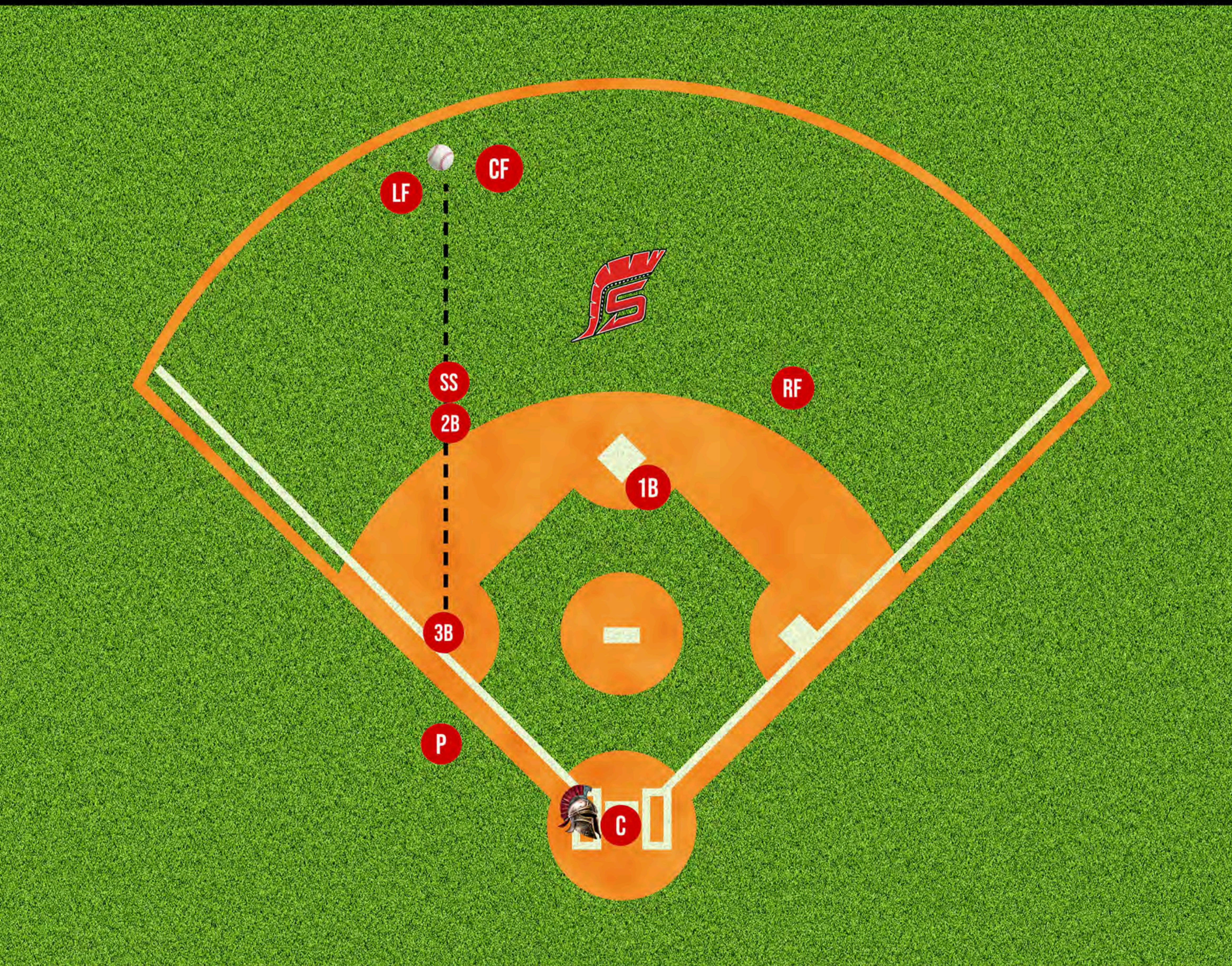
NO RUNNER ON 1ST BASE

DOUBLE TO LEFT FIELD

- SS lead relay
- 2B trail man
- 3B lines up MIF
- 1B, make sure batter touches 1st Base, then trail to 2nd Base



TYLER SPARTANS BASEBALL CLUB



DOUBLE CUTS

NO RUNNER ON 1ST BASE

DOUBLE TO LEFT-CENTER FIELD

- SS lead relay
- 2B trail man
- 3B lines up MIF
- 1B, make sure batter touches 1st Base, then trail to 2nd Base



TYLER SPARTANS BASEBALL CLUB

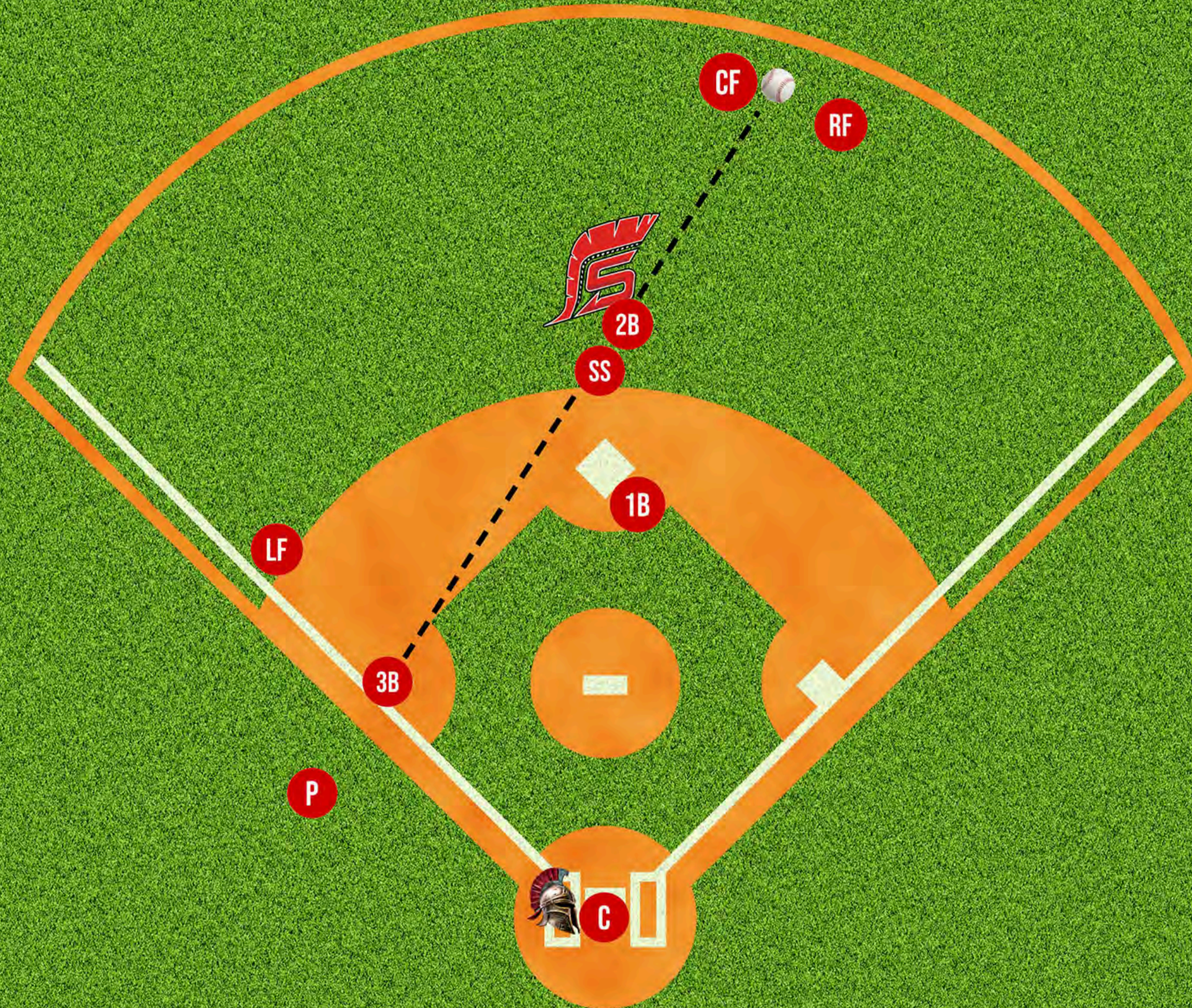
DOUBLE CUTS

NO RUNNER ON 1ST BASE

DOUBLE TO RIGHT-CENTER FIELD

- 2B lead relay
- SS trail man
- 3B lines up MIF
- 1B, make sure batter touches 1st Base, then trail to 2nd Base

*Coach preference on lead/trail



TYLER SPARTANS BASEBALL CLUB

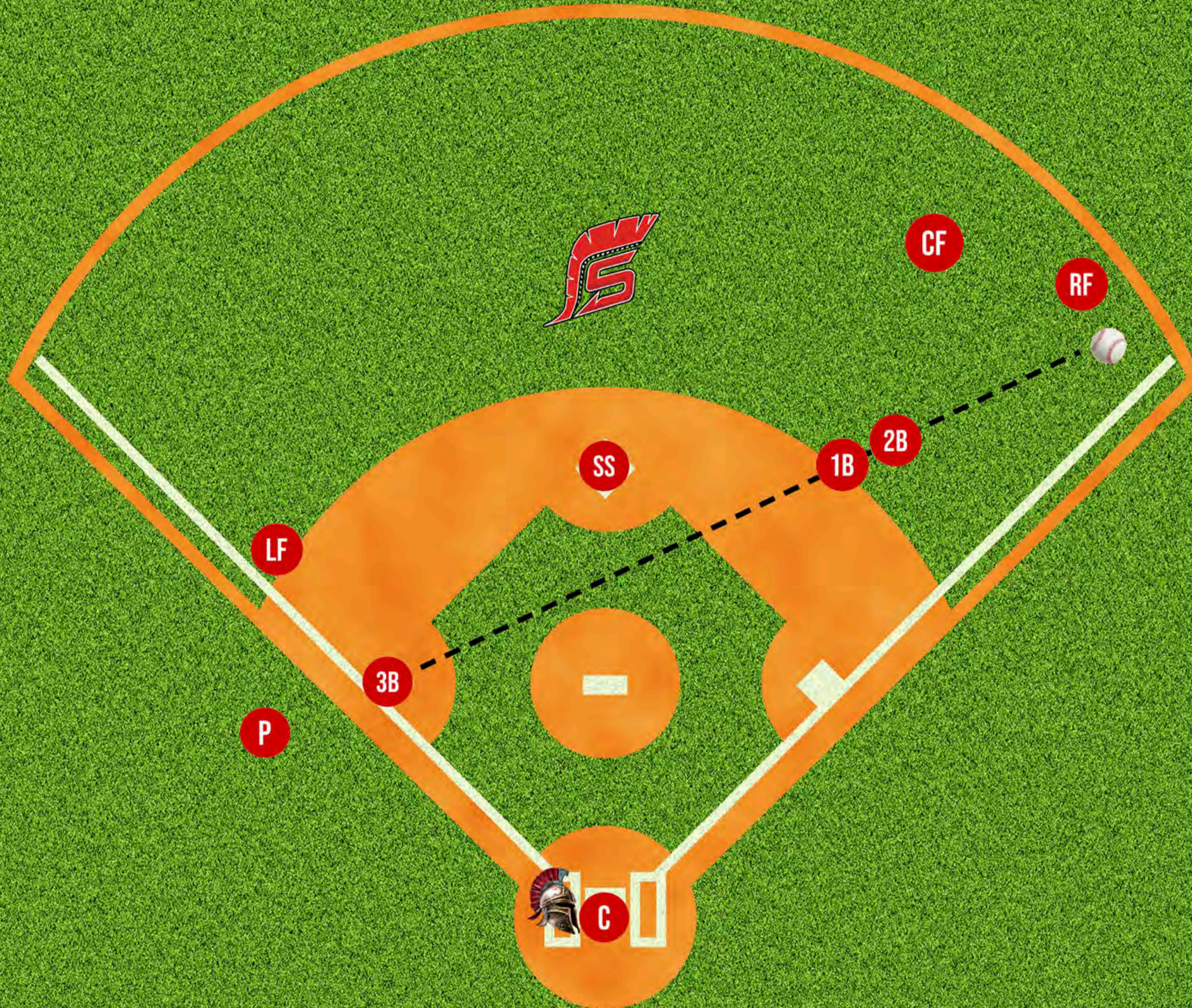
DOUBLE CUTS

NO RUNNER ON 1ST BASE

DOUBLE TO RIGHT FIELD

- 2B lead relay
- SS or 1B trail man
- 3B lines up MIF

*Coach preference on trail man



TYLER SPARTANS BASEBALL CLUB

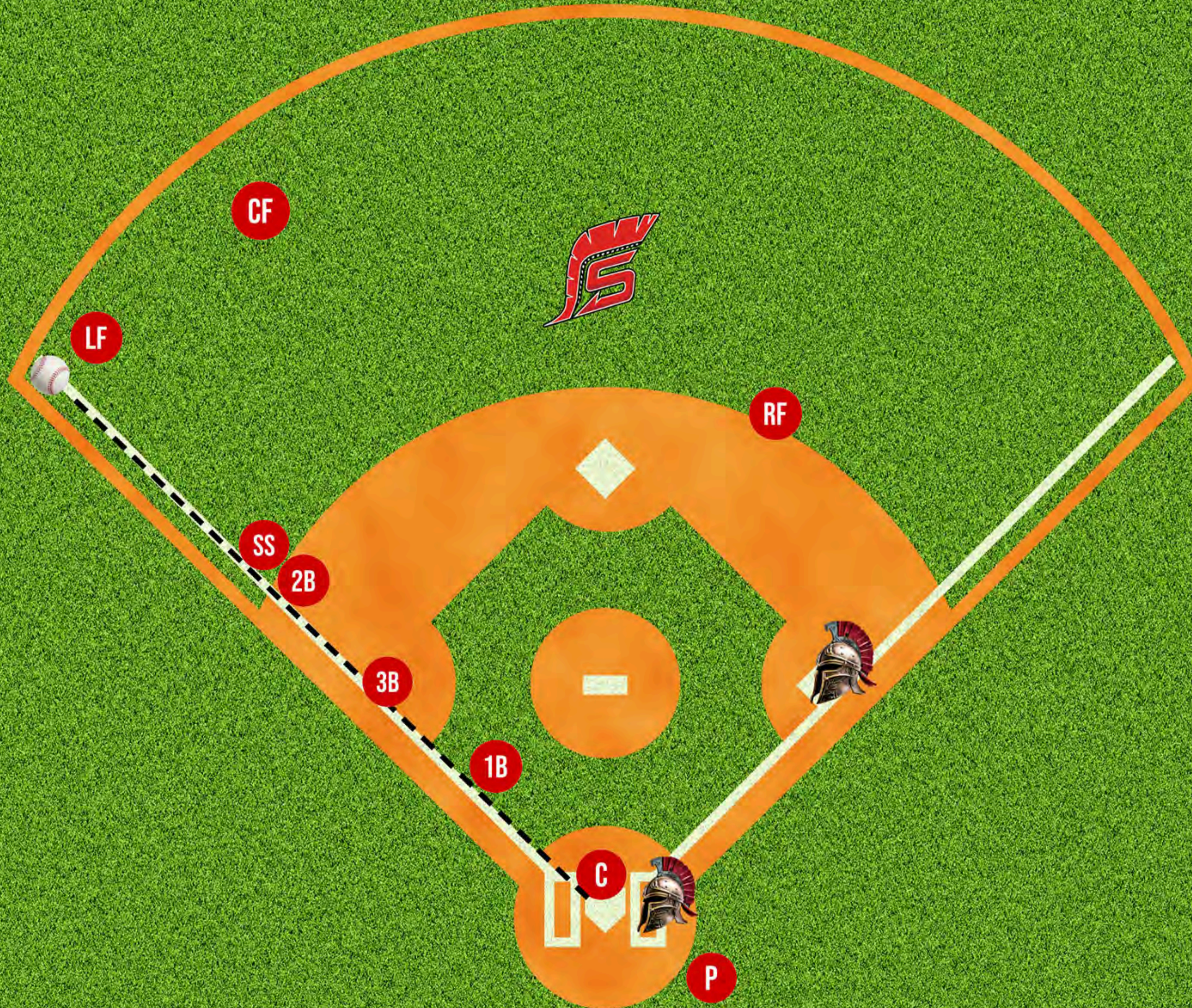
DOUBLE CUTS

RUNNER ON 1ST BASE

DOUBLE TO LEFT FIELD

- SS lead relay
- 2B trail man
- 3B stays at bag for batter/runner
- 1B cut off for offline throw or redirect to get batter/runner
- C lines up MIF

*SS/2B - DO NOT cross the foul line



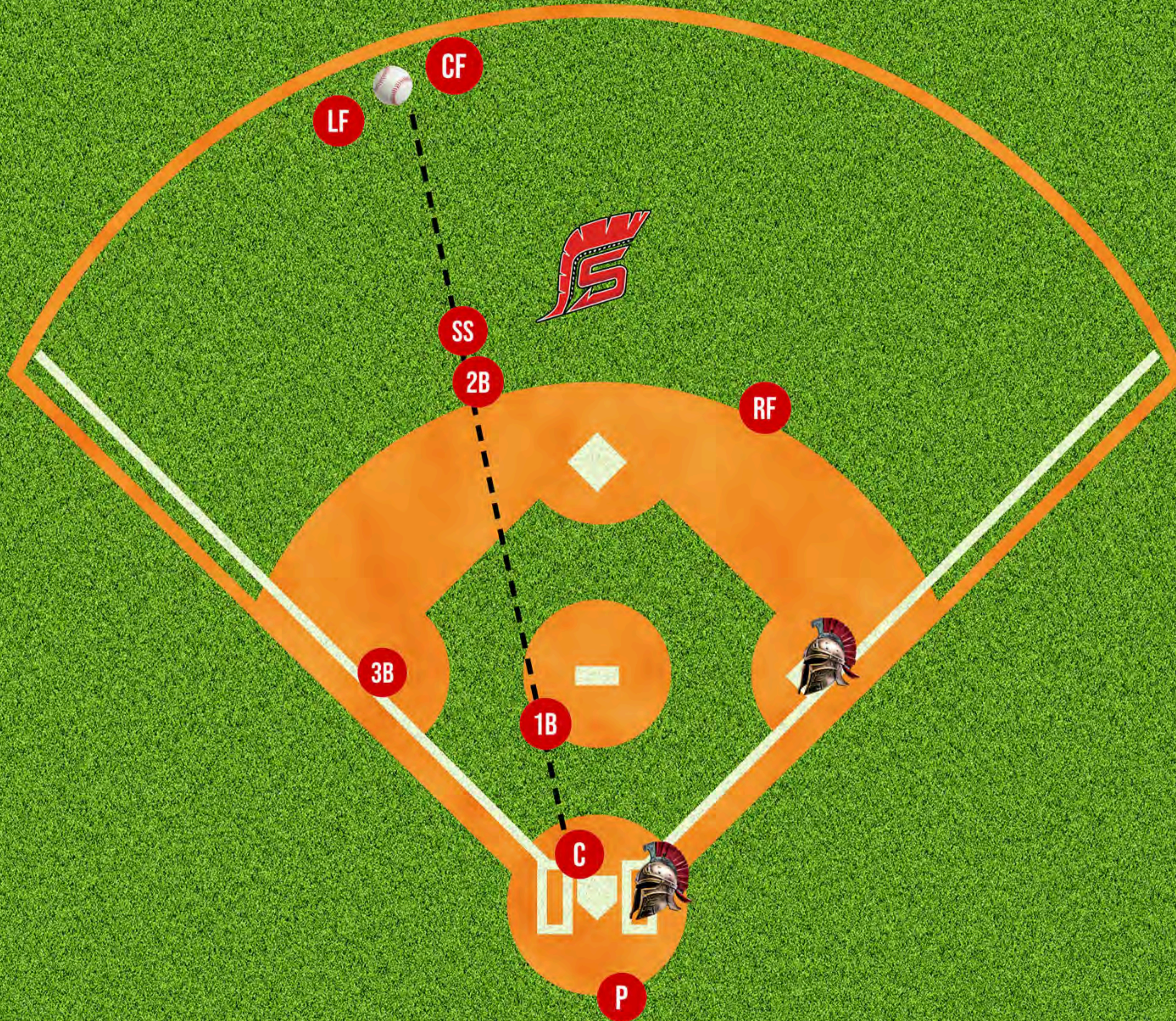
TYLER SPARTANS BASEBALL CLUB

DOUBLE CUTS

RUNNER ON 1ST BASE

DOUBLE TO LEFT-CENTER FIELD

- SS lead relay
- 2B trail man
- 3B stays at bag for batter/runner
- 1B cut off for offline throw or redirect to get batter/runner
- C lines up MIF



TYLER SPARTANS BASEBALL CLUB

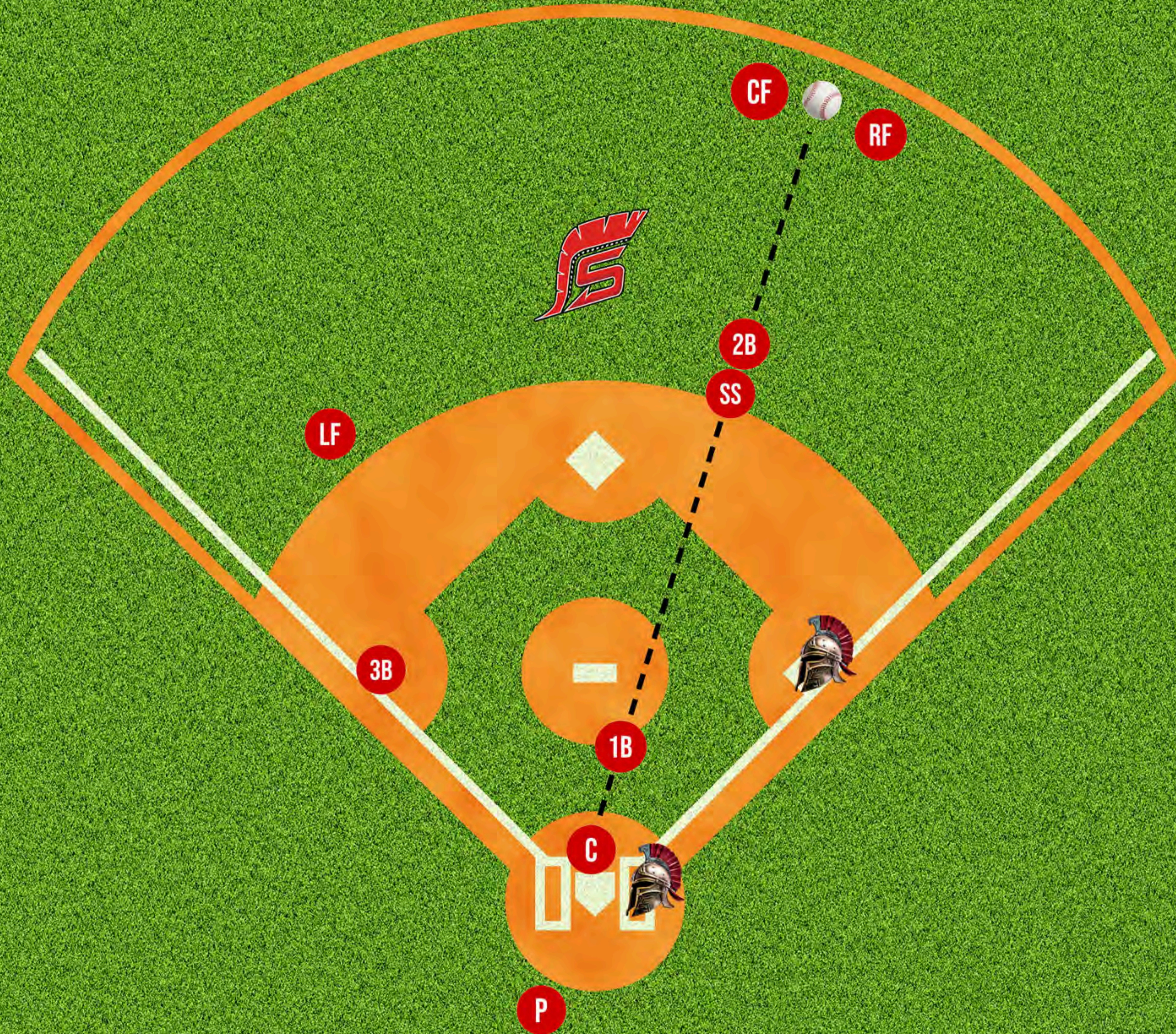
DOUBLE CUTS

RUNNER ON 1ST BASE

DOUBLE TO RIGHT-CENTER FIELD

- 2B lead relay
- SS trail man
- 3B stays at bag for batter/runner
- 1B cut off for offline throw or redirect to get batter/runner
- C lines up MIF

*Coach preference on lead/trail



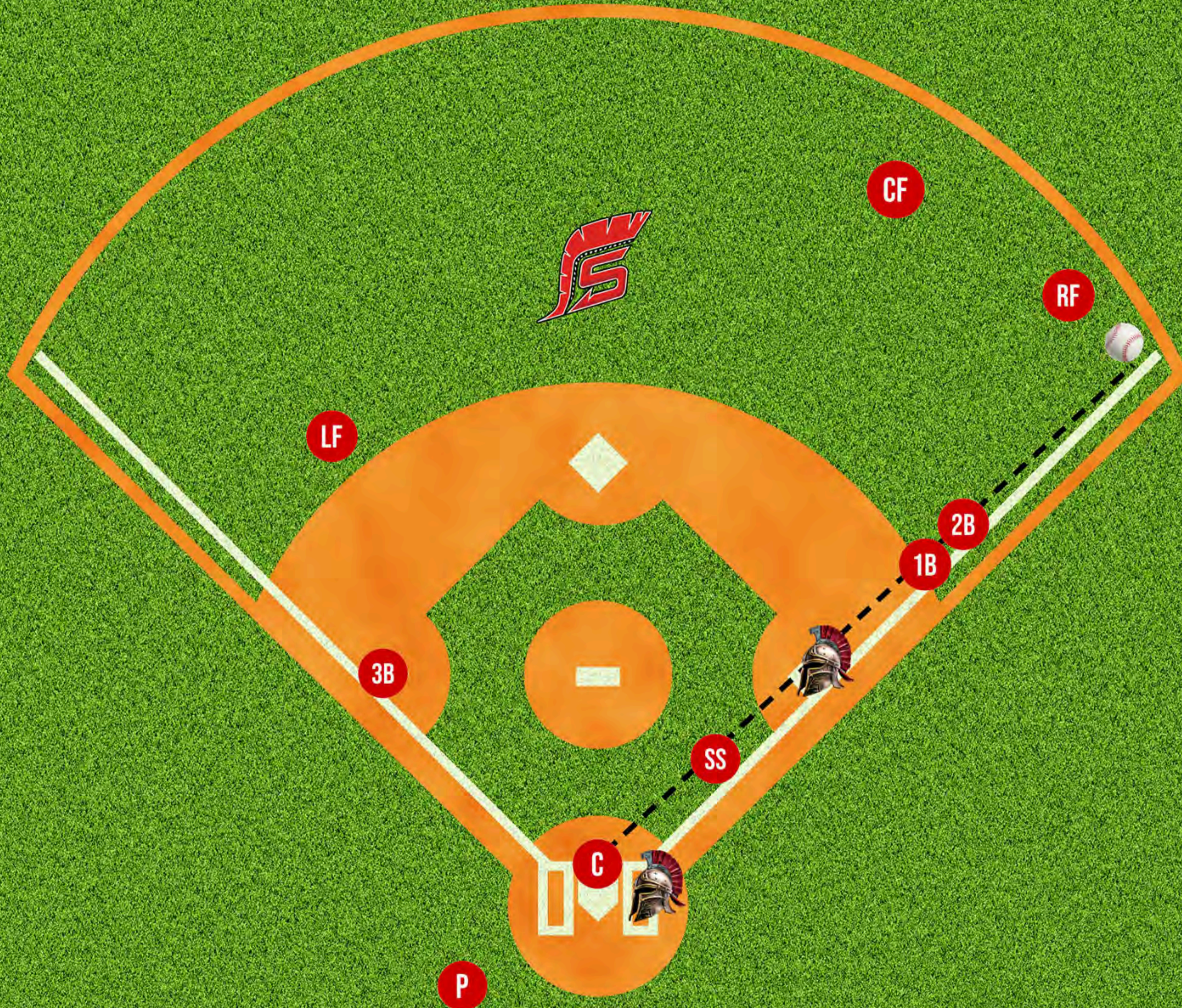
TYLER SPARTANS BASEBALL CLUB

DOUBLE CUTS

RUNNER ON 1ST BASE

DOUBLE TO RIGHT FIELD

- 2B lead relay
- 1B trail man
- 3B stays at bag for batter/runner
- SS cut off for offline throw or redirect to get batter/runner
- C lines up 2B/1B



TYLER SPARTANS BASEBALL CLUB